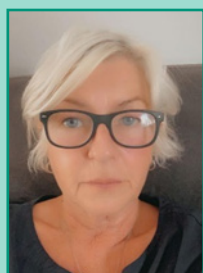


Elective Home Education Newsletter

December 2025



Meet the Team



Caroline Cleghorn
EHE Officer



Jazzmine Allen
EHE Officer

Contact Us

EHE@westberks.gov.uk

01635 503337

01635 503951

01635 519797

EHE Survey

Thank you' to everyone who completed the survey in our September newsletter – your feedback is important to us and has been helpful to us in understanding how you would like us to keep you updated with things.

As you requested, we will continue to keep you updated via emails and the newsletter, on things like local events & activities, useful resources and health & wellbeing services.

Many of you also indicated that you would be interested in opportunities for networking with other families and, as a result, we are hoping to organise an in person event sometime in the new year, to bring together families that home educate and give you the opportunity to meet with us and chat about all things EHE. We will keep you informed about this via email.

How do you keep records of your children's learning?

If, and how you record your child's home education journey will vary from family to family and depend on your approach and style in home education. For some families, it's keeping track of what they are covering and reflecting. Whatever it is, there are lots of ideas on how to do this and something we often get asked about.

We thought this link to a You Tube video may be helpful to you.

[Home Education UK - How We Document Our Children's Learning - Mum of 3](#)

Sometimes it's just about experimenting until you find something that works for you.

College Open Days 2026

Attending College open days can be a helpful way to determine next steps after Yr11. Please use these links to find out how you can sign up to an open day at a college of choice.

Newbury College have an open event on **11th March 2026 from 4pm – 7pm**
[Open Event](#)

Activate Learning in Reading have an open event on **4th February 2026 4.30pm – 7pm** [Reading College February Open Event - Reading College](#)

BCOT [Open Event: 27 April 2026 Tickets, Mon 27 Apr 2026 at 16:30 | Eventbrite](#)

Queen Mary's College is **16th April 2026 5-8pm** [College Open Days Basingstoke | Hampshire College Open Days](#)

The Berkshire College of Agriculture (BCA) is on **18th April 2026 10am – 2pm** [COMING TO OUR OPEN DAY? - Berkshire College of Agriculture - BCA](#)

Sparsholt College is **7th February 2026** [SPARSHOLT COLLEGE OPEN EVENT - SATURDAY 7 FEBRUARY 2026 Tickets, Winchester | Eventbrite](#)

Sparsholt College SEN open event on **23rd April 2026** [Foundation Open Events - Booking Form - Sparsholt College Hampshire](#)

Andover College (part of Sparsholt College) SEN open event on **14th January 2026 & 22nd April 2026 4pm – 6pm** [Foundation Open evenings - Andover College | Hampshire](#)

Exams

We did focus on exams in our September newsletter but thought it would be helpful to remind you that, if you are making plans for your child to sit exams next summer, now is the time to be sourcing an exam centre or venue.

Some families have told us that they are struggling to find an exam centre, locally, that accepts independent candidates so are having to look further afield. We are aware that fewer schools are accepting independent candidates.

If you have not already sourced an exam centre or venue or are having difficulties in finding one, please do get in touch and we will do our best to signpost you.

For those families just starting to think about planning for exams in the next couple of years, you may be starting to consider what type of exam your child may sit. Whilst GCSEs are the most common type of exam sat by young people, there are other options with IGCSE's being one of them. Below is a link we have previously shared, with more information about which may be helpful in deciding which route to take.

[The Difference Between GCSEs and IGCSEs](#)

Health & Emotional Wellbeing

This time of year can be very difficult for everyone, including young people. If you have any concerns and need support or advice in how to support your child, please contact your GP service, or try online resources such as:

[YoungMinds | Mental Health](#)
[Charity For Children And Young People | YoungMinds](#)
[Comprehensive child safety guide | NSPCC](#)
[Home - Kooth](#)
[Time to talk | Counselling for young people in West Berkshire](#)
[Emotional Health Triage service \(EHT\) - West Berkshire Council](#)
[Writing to improve mental health | Can't Talk, Write | Action For Children](#)

Please remember our health partners are contactable for information regarding health matters, including vaccinations and can be contacted via the details below:

Berkshire Healthcare Immunisation Team
Telephone: 0300 365 0077
Email: ssimms@berkshire.nhs.uk

Safeguarding & Online Safety

As you will know Education about Online Safety is essential to help children understand the potential risks they may encounter online.

We can offer signposting to resources to help you in teaching your child about staying safe online and have included links to a few websites you may find helpful.

[Report Remove | Childline](#)

[Social Media Guidance UKCCIS Final 18122015.pdf.pdf](#)

[Help & advice | Childnet](#)

[Keep Children Safe Online: Information, advice, support - Internet Matters](#)

SafeCall is a free, anonymous, and confidential support service for young people affected by missing, county lines and exploitation.

SAFECALL Call/text **116 000** free of charge.

SEND

Were you aware that West Berkshire's Autism Team offer a wide range of courses for parents of SEND young people?

They offer a full calendar of events that run throughout the year including Sensory Concerns, Overwhelm and Adaptations course & Autism Post Diagnosis Workshops.

Please contact us for further information.

To view and book courses online visit www.westberkseducation.co.uk/training

Telephone: 01635 503033 Email: training@westberks.gov.uk

Or to contact the SEN team please call **01635 519713**.



And finally we would like to wish you a very happy & restful festive break and thank you for working with us this year. We look forward to supporting you all in 2026.

As always you can contact us at any time at EHE@westberks.gov.uk