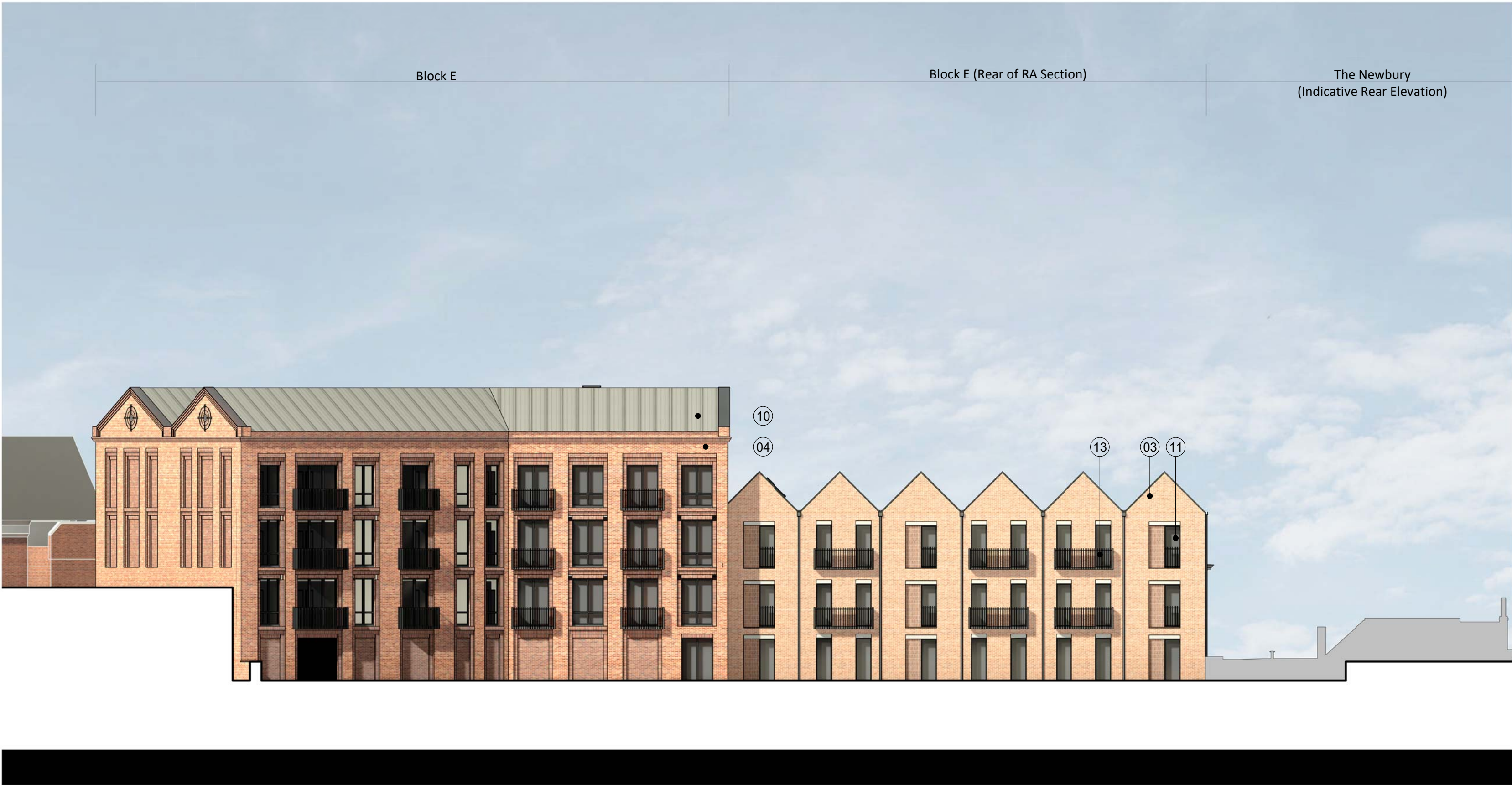
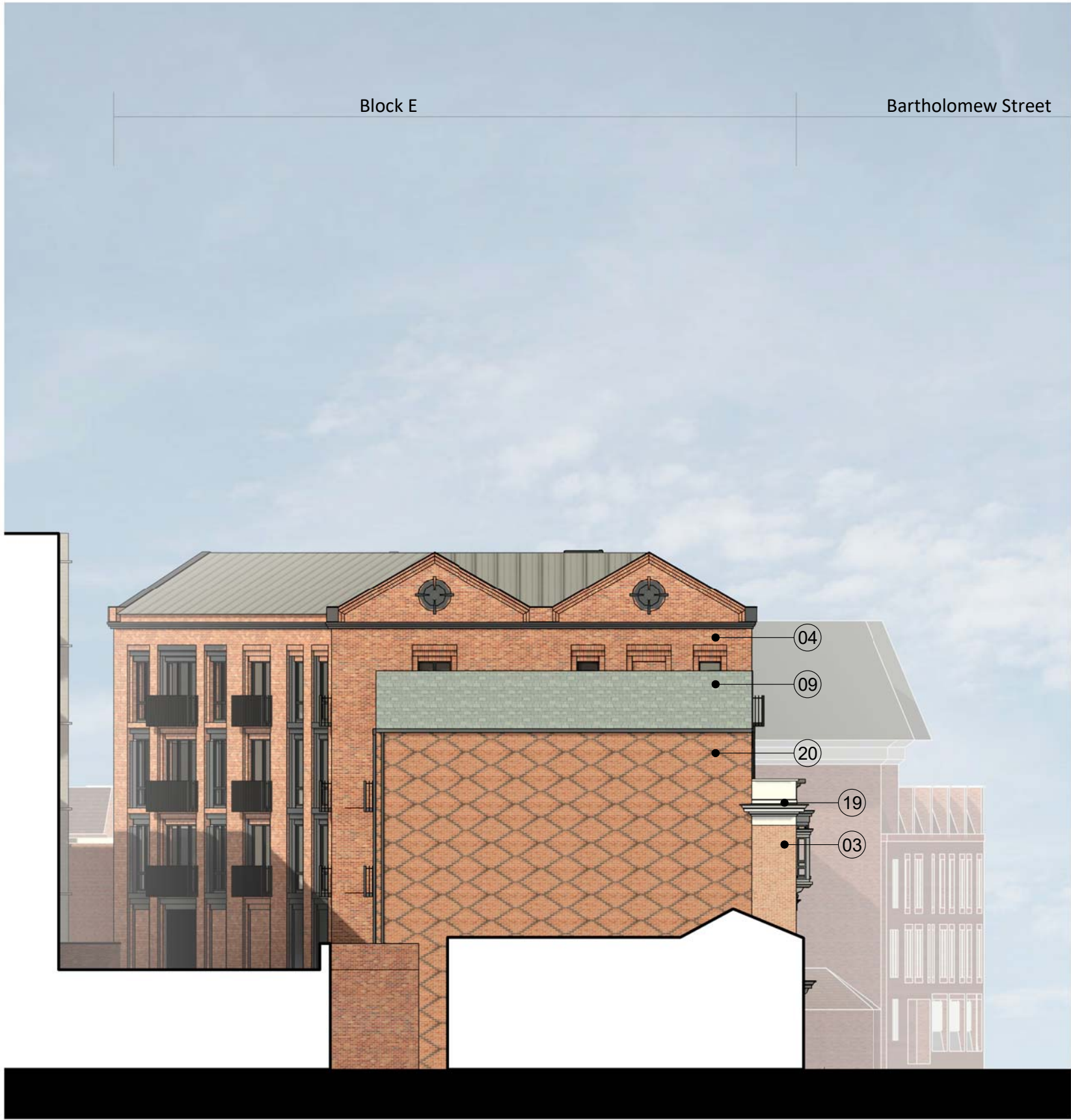


1 Block E - West (Bartholomew Street) Elevation
1 : 200



3 Block E - East (Courtyard Podium) Elevation
1 : 200



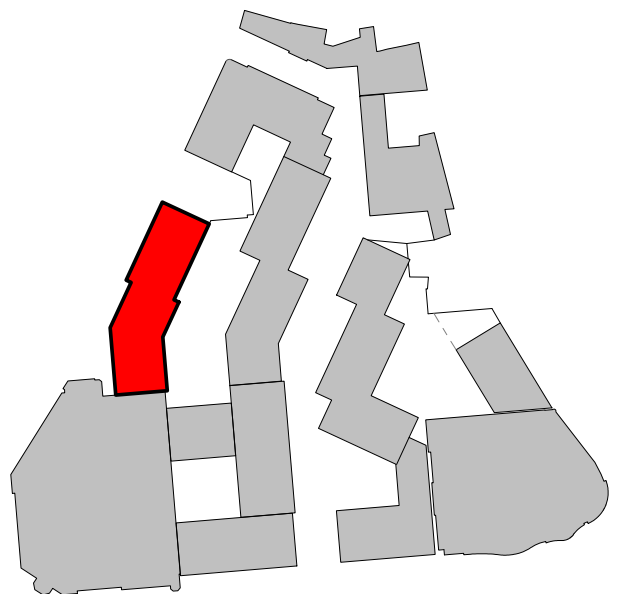
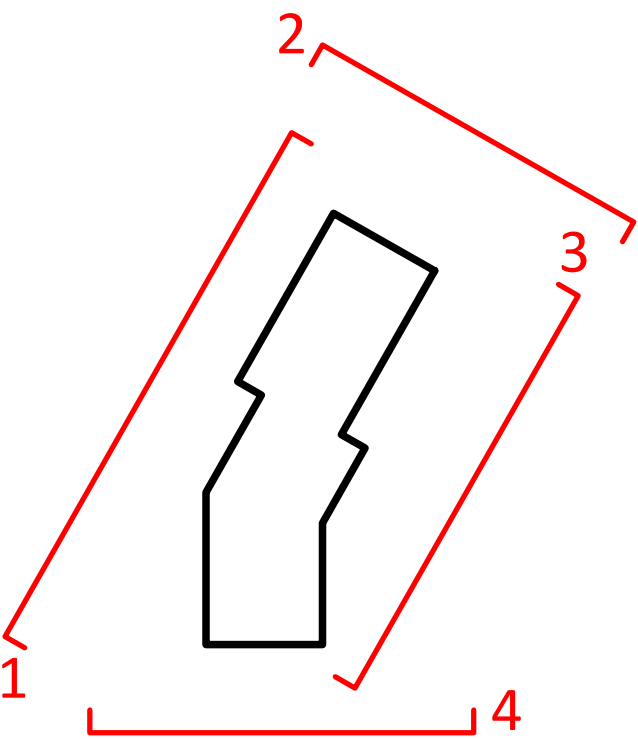
2 Block E - North Elevation
1 : 200



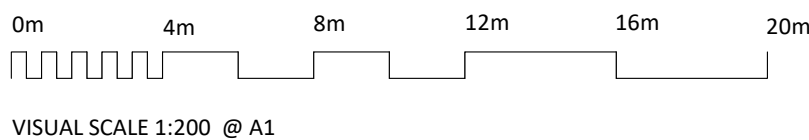
4 Block E - South Elevation
1 : 200

MATERIAL NOTES

- 01 Brick - Beige
- 02 Brick - Light Grey
- 03 Brick - Light Red
- 04 Brick - Red
- 05 Brick - Dark Red
- 06 Brick - Blue
- 07 GRC or Similar - Light Grey
- 08 GRC or Similar - Dusty Pink
- 09 Roof Tiles
- 10 Standing Seam Metal Roof - Dark Grey
- 11 Window / Door Frame - Dark Grey
- 12 Window / Door Frame - Bronze Effect
- 13 Metal Railing / Details - Dark Grey
- 14 Metal Railing / Details - Bronze Effect
- 15 Expanded Mesh
- 16 Brick Detail to Parapet
- 17 White Render
- 18 Window/ Door Frame - White
- 19 White GFRG Detailing
- 20 Brick - Diamond Pattern
- 21 Clay Hanging Wall Tiles
- 22 Window/ Door Frame - Dark Green
- 23 Standing Seam Metal Roof - Dark Brown
- 24 Solid Panels to Sky Bridge
- 25 Light Grey Render
- 26 Obscure Glass Windows



NOTES				
CONSULTANTS				
- Refer to highways consultant's drawings for details				
- Refer to landscape consultant's drawings for details				
AREAS				
- Refer to area schedule				
Rev	Notes	Date	By	Auth
P1	Issued for Planning Submission	12/02/2021		
P2	Massing reduced (HE's comments)	03/08/2021		
P12	Elevations Issue for Comment	07/07/2023	MM	RC
P14	Pre-Planning Issue	16/08/2023	MM	RC
P15	Balconies removed on B, E and S	01/09/2023	MM	RC
PA	PLANNING SUBMISSION	06/09/2023	MM	RC
PB	Post-planning amendments	12/10/2023	MM	RC
P18	Revised to HE comments	29/11/2023	MM	RC
P19	Revised to Fire Engineer comments	01/12/2023	MM	RC



ColladoCollins Architects

17-19 Foley Street
London W1W 6DW
T 020 7580 3480
F 020 7580 2917
info@colladocollins.com
www.colladocollins.com

Date: 29/01/2020
Drawn By: LK
Checked By: RC
Scale @ A1: As indicated
Scale @ A3: 1 : 400
CAD File No:

LOCHAILORT

Eagle Quarter, Newbury
Proposed Elevations - Block E

PLANNING
20011

P3-108

P19