



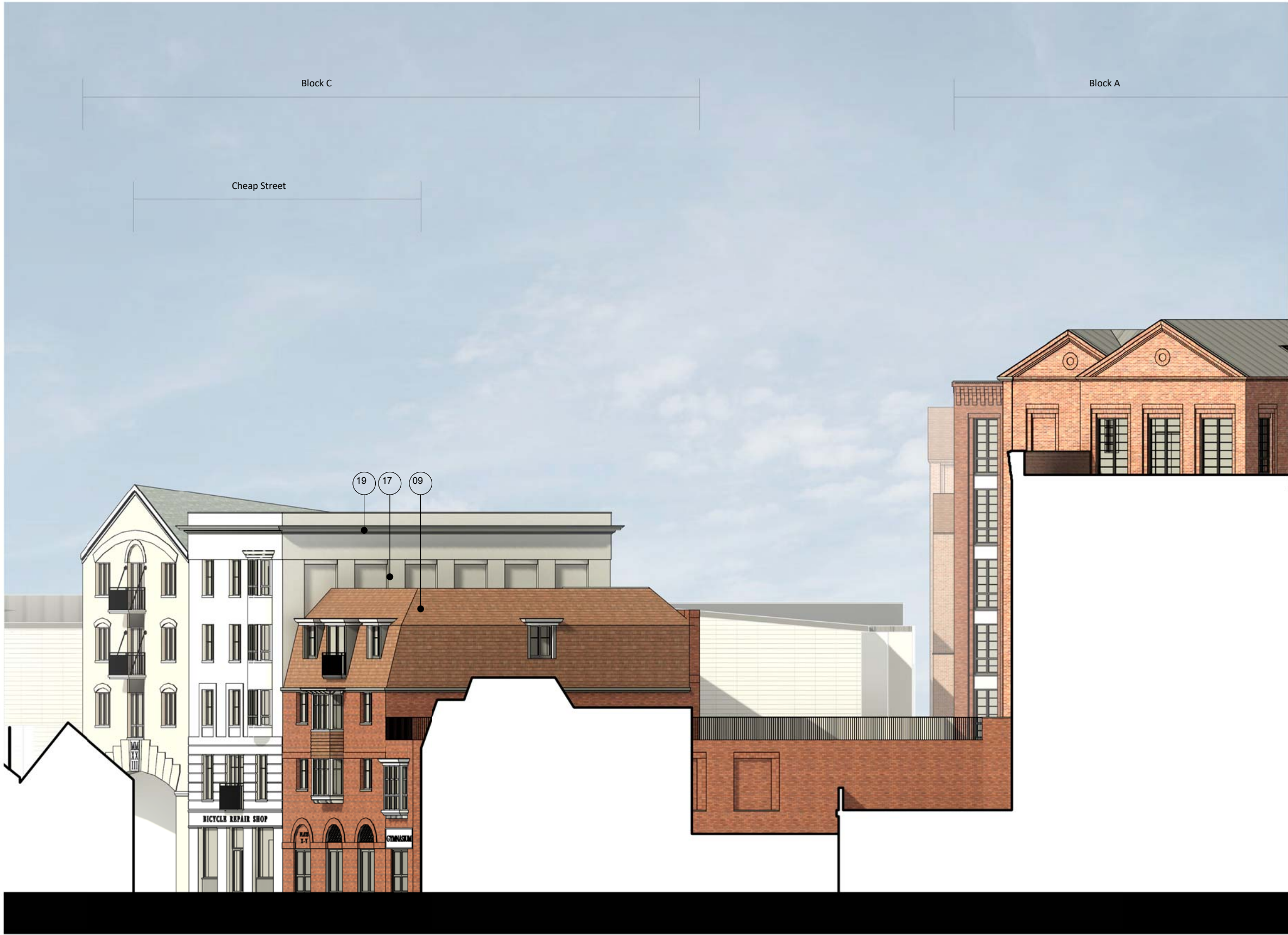
1 Block C - East (Cheap Street) Elevation

1 : 200



3 Block C - West (Rear) Elevation

1 : 200



2 Block C - North Elevation

1 : 200

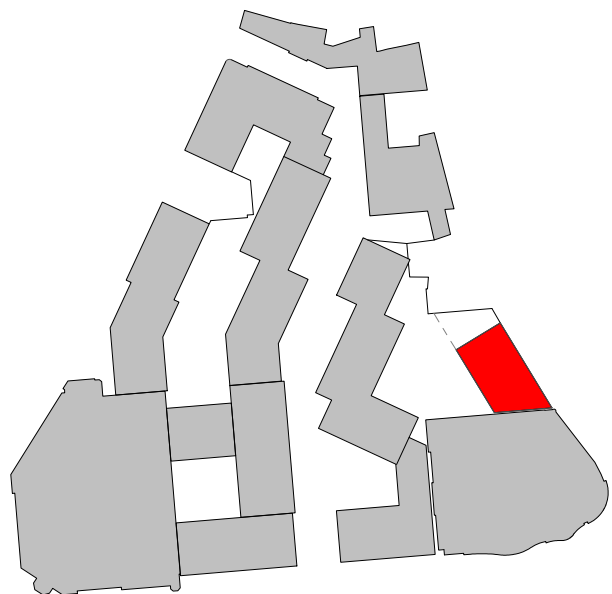
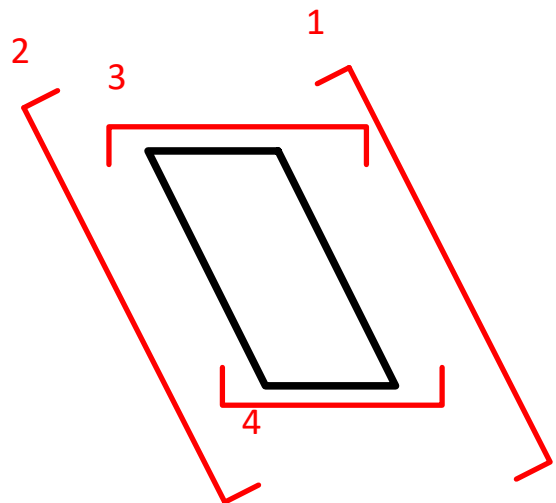


4 Block C - South Elevation (Cinema Boundary)

1 : 200

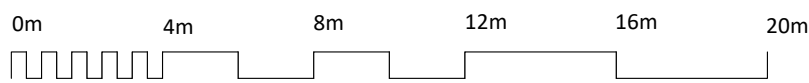
MATERIAL NOTES

- 01 Brick - Beige
- 02 Brick - Light Grey
- 03 Brick - Light Red
- 04 Brick - Red
- 05 Brick - Dark Red
- 06 Brick - Blue
- 07 GRC or Similar - Light Grey
- 08 GRC or Similar - Dusty Pink
- 09 Roof Tiles
- 10 Standing Seam Metal Roof - Dark Grey
- 11 Window / Door Frame - Dark Grey
- 12 Window / Door Frame - Bronze Effect
- 13 Metal Railing / Details - Dark Grey
- 14 Metal Railing / Details - Bronze Effect
- 15 Expanded Mesh
- 16 Brick Detail to Parapet
- 17 White Render
- 18 Window/ Door Frame - White
- 19 White GFRG Detailing
- 20 Brick - Diamond Pattern
- 21 Clay Hanging Wall Tiles
- 22 Window/ Door Frame - Dark Green
- 23 Standing Seam Metal Roof - Dark Brown
- 24 Solid Panels to Sky Bridge
- 25 Light Grey Render
- 26 Obscure Glass Windows



NOTES				
CONSULTANTS				
- Refer to highways consultant's drawings for details				
- Refer to landscape consultant's drawings for details				
AREAS				
- Refer to area schedule				
© Copyright Reserved. ColladoCollins Architects Ltd				

Rev	Notes	Date	By	Auth
P1	Issued for Planning Submission	12/02/2021		
P2	Massing reduced (HE's comments)	03/08/2021		
P12	Elevations Issue for Comment	07/07/2023	MM	RC
P14	Pre-Planning Issue	16/08/2023	MM	RC
PA	PLANNING SUBMISSION	06/09/2023	MM	RC
PB	Post-planning amendments	12/10/2023	MM	RC
P17	Block C revised	07/11/2023	MM	RC
P18	Revised to HE comments	29/11/2023	MM	RC
P19	Revised to Fire Engineer comments	01/12/2023	MM	RC



VISUAL SCALE 1:200 @ A1

ColladoCollins Architects

17-19 Foley Street
London W1W 6DW
T 020 7580 3490
F 020 7580 2917
info@colladocollins.com
www.colladocollins.com

Date: 29/01/2020
Drawn By: LK
Checked by: RC
Scale @ A1: As indicated
Scale @ A3: 1 : 400
CAD File No:

LOCHAILORT

Eagle Quarter, Newbury

Proposed Elevations - Block C

PLANNING

20011

P3-105

P19
Revision